

ACCURO



FL301 At-Home Bluetooth
Floor Scale

Quick Start Guide

Instructions for:

1. Getting Started
2. Downloading the Accuro App
3. Connect to the scale
4. Using the scale
5. Keys and Icons
6. Important Information

Getting Started:

1. Included in packaging: FL301 scale and 4 AAA batteries
2. Remove the scale from the packaging
3. Install the 4 AAA batteries
4. Place FL301 scale on flat, hard surface for maximum accuracy.

Note: Do not place scale on carpet

Downloading the Accuro App:

*Using your mobile device, download the Accuro App.



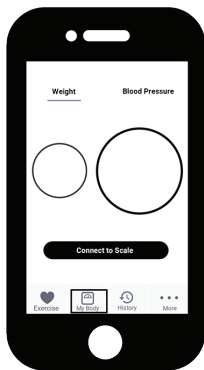
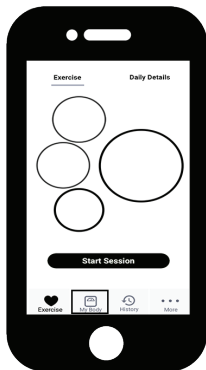
Accuro App

Note: If first time downloading the Accuro App, you will need to create an account.

Connect Scale

Connect Scale:

1. On the Home Page select "My Body"
2. Press "Connect to Scale"

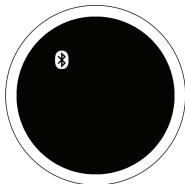
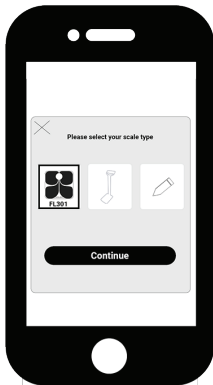


Note: Please make sure there are no other FL301 scales near the scale you are connecting to as this may cause a connection issue between the App and your FL301.

Connect Scale cont'd:

3. Select the FL301 from the list and press Continue
4. The Accuro App will begin scanning for the FL301.

When the FL301 is connected you will see a message appear on the app to "Step on the Scale". You will also see the Bluetooth icon on the FL301 display when you step on the scale.



FL301 Display

Using the Scale:

1. Step on the scale and position your feet so that your weight is distributed evenly over the scale's surface.
2. Stand still while you are reading the display. Your current weight will be displayed on the scale and App.

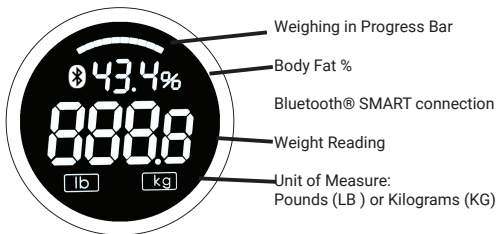
Note: If you want to read body water %, bodyfat %, and BMI on the scale and app, you will need to remove shoes and socks before stepping on the scale.



Your information has now been saved in the Accuro App

Note: To ensure your information is saved in your App, please make sure that your mobile device is close to the scale.

FL301 Display Icons:



Important Information

1. This scale requires 4 AAA batteries. When “Lo” appears on the display, replace the batteries.
2. There are 2 ways to change the unit of measure:
 - Unit can be changed in your user profile on the Accuro App. The FL301 will automatically adjust the unit of measure based on your profile
 - If not using the Accuro App, you can change the unit of measure by pressing the tab on the back of the FL301 to lb or kg.
3. To clean your scale, please use a dry cloth to remove dust. Weight exceeding the capacity (400 lb / 180 kg) may damage your scale
4. This product is designed for personal use only.
5. Not for commercial or industrial use.
6. This unit is not waterproof; avoid excessive moisture areas

For more information visit
accurofit.com

